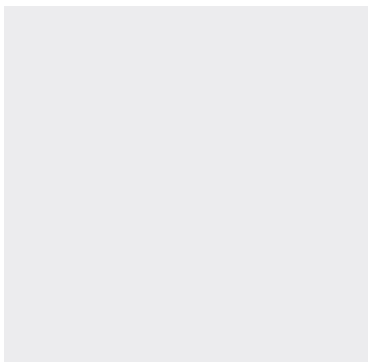


connecting the world through **play.**



A well designed
play space shapes
the world that
surrounds it, and
most importantly,
the people that
play within it.





Kids will play.

They will create moments that make them so happy that they feel as if they could fly. They will fall down. They will face challenges. They will overcome obstacles. They will learn. They will experience pride and friendship. They will make new discoveries. They will grow up to climb mountains. To conquer new fears and seek out the impossible. They will make a home. They will find time for fun. They will fight for what they know is right. They will face the unknown knowing only that they can...

because they already have.



At Waterplay® we're passionate about play. We believe that bringing play to communities makes the planet more livable and socially just. With thousands of installations across the world, we're excited to be a part of the movement toward a healthier, happier, global community by offering innovative play solutions designed for developing minds, thrill seekers, budding explorers and the young at heart. Contact us today to experience [#theWaterplayDifference](#) and join our movement to connect the world through play.



SPLESJ HOLIDAY PARK netherlands



our APPROACH

DREAM

Discover your dream with Creative Collections—carefully selected product and colour compilations made to help you tell any story, evoke any mood and realize any vision. It's easy to bring the play space of your dreams to life with Waterplay... go ahead and begin your design today.

DESIGN

Innovation, discovery, and inclusivity—these are the philosophies that drive our product design. We offer innovative play solutions using carefully selected materials to ensure durability and outstanding performance. We're proud to lead the industry where it really matters, through quality, safety, play value and continuous improvement.

DELIVER

We CARE. We believe that through Commitment, Attitude, Respect and Equality we will get the job done right. Partner with Waterplay to experience [#theWaterplayDifference](#) and discover our unmatched level of quality, expertise and support.





DREAM

“ Nothing
happens
unless first...
we dream. ”

— Carl Sandburg

GOOD DESIGN HAS A STORY TO TELL...

Shaped by history, the natural landscape, or spirit of a community—good design has a story to tell. Share tales of the high sea, mark a moment in time or embark on a water adventure that brings you back to nature. With our extensive product lines, any story is possible. *Where will yours take you?*

DREAM. DESIGN. DELIVER.

www.waterplay.com

HOTEL & RESORT



FEATURED CREATIVE COLLECTIONS

PRODUCTS *high sea collection*
COLOURS *nautical collection*



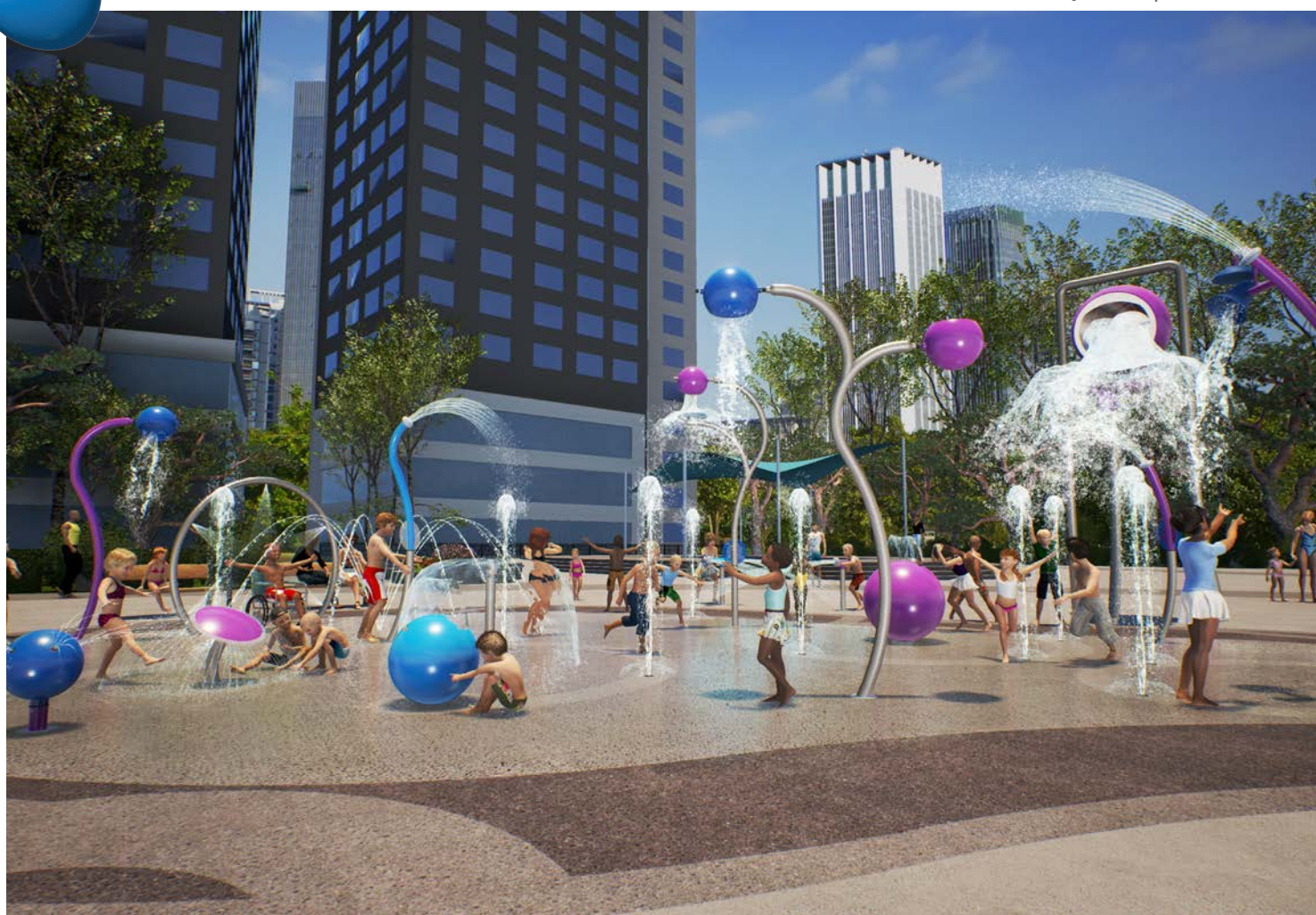
“

Thoughtfully selected colour palettes not only influence the beauty of the space but also the way people play and interact.

”

MARKUS EHRLING designer | GERMANY

URBAN SPACE

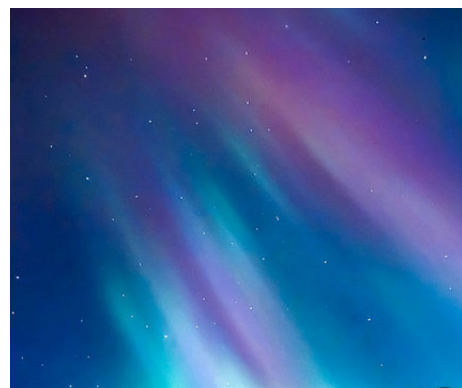


FEATURED CREATIVE COLLECTIONS

PRODUCTS *revolutions collection*
COLOURS *urban collection*

DREAM. DESIGN. DELIVER.

www.waterplay.com



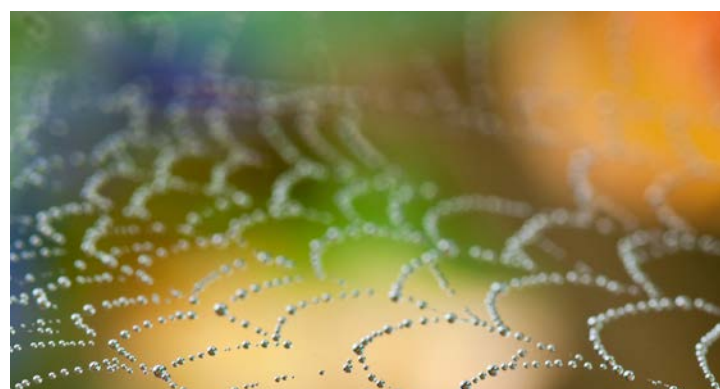
DREAM IN COLOUR.

Your colour choices are instrumental in bringing your story to life. Colour evokes feeling and imagination. It propels us forward, ignites ideas, brings us to a complete stop and even stirs our memory. Our Colour Collections are designed to help you achieve the play space of your dreams.



DESIGN FOR INTERACTION WITH PLAY CLUSTERS™

Play Clusters let you choose features that work together for a truly immersive play experience. They bring a range of features into harmony to foster particular styles of play. From hide and seek amongst a stony meadow to a wandering labyrinth peppered with poppies, or a thoughtful grouping with gentle surf stones, a Play Cluster can stand alone or complete a series of clusters to maximize fun for all ages and abilities.



DREAM. DESIGN. DELIVER.

www.waterplay.com

PLAYFUL MEADOW



CRITTERS IN THE GRASS



POPPY LABYRINTH



SERENE STONES



AQUATIC FACILITY



FEATURED CREATIVE COLLECTIONS

PRODUCTS *grasslands - ehrling collections*
COLOURS *nature collection*

THE EHRLING COLLECTIONS

A product design collaboration with Markus Ehrling, world-renowned public space designer, the Ehrling Collections by Waterplay are the perfect balance of play value, beauty, form and function.



With over 25 years of industry experience, Waterplay has helped shape thousands of aquatic play spaces throughout the world. Our product design theory is strict, our quality is unmatched, our safety standards lead the industry and our products tell a story that pushes play outside the bounds of everyday fun and into a world of discovery.

DESIGN



PRODUCT LINES



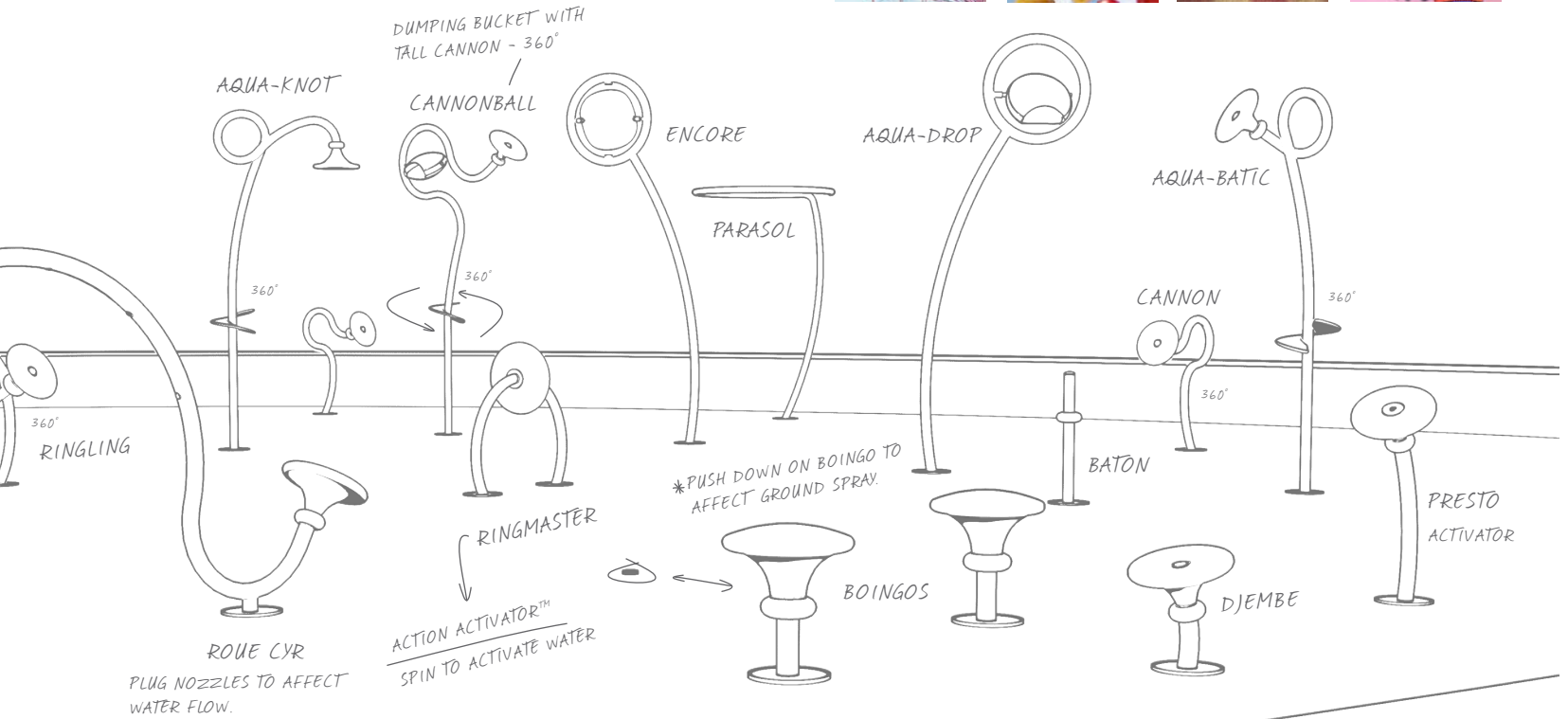
WATER MANAGEMENT
URBAN FEATURES
AQUATIC PLAY
ACTIVITY TOWERS

DREAM. DESIGN. DELIVER.

www.waterplay.com

PRODUCT DESIGN

CIRQUE PRODUCT CONCEPT 16/07/2015



COLOURS



COLLABORATION, WONDER,
IMAGINATION AND DELIGHT - CIRQUE

PRODUCT DESIGN PHILOSOPHY

INNOVATION

As industry leaders we are committed to improvement, overcoming challenges and finding new inspiration. We constantly ask ourselves 'why?', 'what if?' and 'how can we?' These questions drive us forward; it is our passion that empowers us to find answers and create new ways to play.

DISCOVERY

It's through experiences that children discover the world. Designing products that focus on touch, sight, sound, action-reaction and cooperation allow waterplayers to explore outside the bounds of everyday fun and into a world of development and discovery.

INCLUSIVITY

Using universal design theory combined with over 25 years of aquatic design and manufacturing experience, our products are designed to invite users of all ages and abilities to have an interactive play experience that goes beyond standard accessibility best practices.



FREESTANDING AQUATIC PLAY

LAUGH · SPIN · COLLABORATE · SOAK · FEEL · CONQUER · PLAY



DREAM. DESIGN. DELIVER.

www.waterplay.com

Freestanding aquatic play is where the action unfolds and the fun begins. When we design an aquatic play element, we're designing moments of discovery, memories to cherish and opportunities to collaborate. Our product collections are designed to the highest standards to ensure that your play space and its waterplayers reach their greatest potential.



- DUMPING BUCKETS
- SPIRALS & ARCHES
- CHARACTERS
- STRUCTURES
- COLUMNS
- CANNONS
- GROUND SPRAYS
- ACTIVATORS

HIGH SEAS COLLECTION | TREASURE ISLAND HOLIDAY PARK australia



ACTIVITY TOWERS

SPLASH · SPRAY · SLIDE · REPEAT · SPLASH · SPRAY · SLIDE



CUSTOM COLLECTION | GARSIDE POOL usa

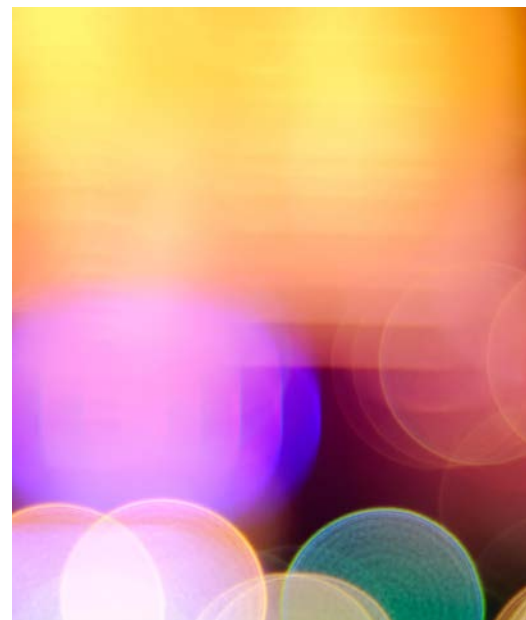
Imagine the ultimate fort packed with splashes inside and out—discover Activity Towers by Waterplay. Completely modular, the Activity Tower combines multiple elevations with action-packed play elements and slides to create a powerhouse of play.

DREAM. DESIGN. DELIVER.

www.waterplay.com



Connect multiple pods,
choose from slides, cannons,
spray features, dumping
buckets and more to build a
unique structure that fits into
any space.



URBAN FEATURES



SEE · TOUCH · SMILE · CONNECT · EXPLORE · UNWIND

Our line of urban water features harnesses the tactile, visual and auditory elements of moving water to infuse modern landscapes with beauty. Design a stunning water oasis in a busy city centre, add visual impact to a gathering space with a showcase water feature, or compose a more dynamic setting for your next aquatic play space. Get creative with your next urban design.

DREAM. DESIGN. DELIVER.

www.waterplay.com

WILDWOOD COLLECTION

WOODHAVEN CONDOMINIUMS singapore

Our advanced water management solutions are engineered to meet the specific needs of your project, big and small. With Waterplay you can expect the highest standards in water quality, operating efficiency, and sustainability.

TOOLS & SYSTEMS

WATER MANAGEMENT

RECIRCULATION

RETAIN & REUSE

FLOW THROUGH



DELIVER

Our purpose is to
bring the joy of
water to people and
communities.



“ The team at Waterplay are go-to suppliers when I design splash pads, play streams, and outdoor water play elements. They listen to my needs, they work with me to find sustainable, creative and cost effective solutions for my clients; they understand time constraints and the deadline driven world that consultants live in.

”

RICHARD FINDLAY landscape architect, RFLA | CANADA



DREAM. DESIGN. DELIVER.

www.waterplay.com

#TheWaterplayDifference

We **CARE** about what we do and that passion comes through in the integrity of our products and people. At Waterplay we believe that every task we undertake is important and deserves our utmost **COMMITMENT**, we embrace the **ATTITUDE** that anything is possible, our teamwork is fueled by mutual **RESPECT** and we promote an environment of **EQUALITY** that invites collaboration.

QUALITY

Quality is a standard that something is measured against. At Waterplay, we strive to deliver the highest standards in the industry through the products we offer, the people we employ, the in-house procedures we put in place and the partners and suppliers we work with.

EXPERTISE & SUPPORT

Every project is different and comes with its own set of unique obstacles. With years of industry experience and expertise, Waterplay's global support teams can guide you through the planning stages of your project and beyond. Our expert team is comprised of research and design specialists, in-house manufacturing and logistics, on-site service and training, as well as project support specialists that offer ongoing assistance throughout the lifetime of your project.

WATERPLAY + SUSTAINABILITY

As an organization and manufacturer, we're committed to making a difference both in-house and through the products we ship worldwide. Waterplay is ISO certified for environmental management processes (14001:2004). Our corporate office and manufacturing facility are situated in a community serviced by hydroelectricity and we actively reduce waste by sourcing recyclable materials with consideration to the amount that will be left unused. Our non-toxic materials and coatings ensure safety for waterplayers and the environment. We are committed to designing products with low flow rates and encouraging play spaces that are designed to control water use through activation, sequencing and water management best practices.



“

It's rare when your dreams are surpassed by reality, but Waterplay has really delivered so much more than I could have ever imagined. The children who attend the camp have different abilities; the variety of water displays and the interactive sound features provided lots of sensory fun for those with sensory disabilities. Every one of the children enjoy the Waterplay pad!

”

ALLEN MOORE wonderland camp for disabled children | USA

“

In 2014 we refurbished Splesj Water Park to include a spray park—at 900m2 it is the largest spray park in Europe. The play features by Waterplay are manufactured to a high quality and completed with a sleek finish; as well, maintenance requirements are low. The spray park is safe and fun with striking water features that appeal to the entire family—the Mega Soaker and Discovery Stream are park favourites. It is delightful to watch our guests have a fun family experience in the spray park.

”

JUDITH GERRITSEN splesj water park | NETHERLANDS

“

I've been designing spray parks and aquatic facilities for almost 18 years and have worked with a lot of vendors and manufacturers along the way. Waterplay is one of the very best I've worked with—always ready to work out solutions that meet the needs of the project and client. We have worked together to create water reuse systems, client-specific highly customized systems, combined pool circulation and spray feature systems and many others. My clients are very happy with the Waterplay products and after-installation support. As a design consultant, you can't ask for more than that.

JESSE BARKSDALE president, LEED-AP, enginuity systems | USA

”

“

As a professional who has been working in the park and play industry for over 16 years, it's refreshing to be affiliated with a manufacturer who genuinely cares about their customers and associates. Waterplay's commitment and attitude towards the customer in working to make every project a success is evident and visible throughout the company. Their vigorous dedication to doing what's right makes Waterplay the right choice.

”

ERIC WRIDE owner, CPSI, k2 recreation | USA

CERTIFICATIONS & STANDARDS

We feel that everyone deserves the opportunity to experience the joy of water and we're proud to be connecting the world through play. In our effort to create the most innovative and fun play solutions, we never compromise on designing and manufacturing to the highest global certifications and standards in quality, safety and inclusivity. In 2010, Waterplay became the first aquatic solutions manufacturer to obtain independent ISO certification for quality and environmental processes—a natural step in ensuring that Waterplay's in-house procedures lead the industry through a process of strict quality control and management. Customers of ISO-registered companies know they can expect products and services of exceptional quality.

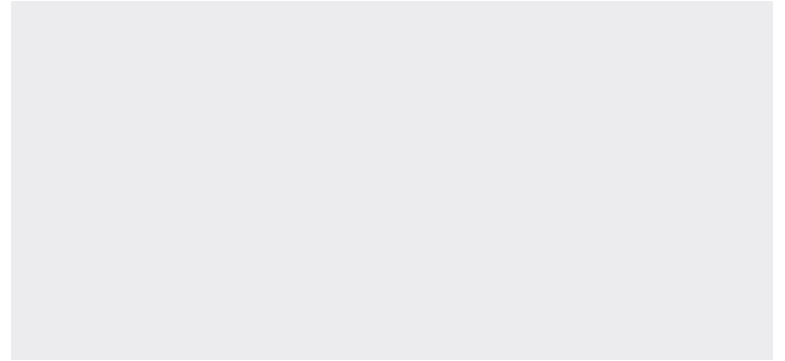
DREAM. DESIGN. DELIVER.

www.waterplay.com



WATERPLAY SOLUTIONS CORP. | 1451B Ellis Street, Kelowna, British Columbia, Canada V1Y 2A3

1.800.590.5552 (USA & CAN) | +1 (250) 712.3393 (INTL) | info@waterplay.com



W W W . w a t e r p l a y . c o m



We are committed to making the world a better place by offering innovative aquatic play solutions to the global community. Contact us today to experience [#theWaterplayDifference](#) and ensure that your next project will push play outside the bounds of everyday fun and into a world of discovery.

1.800.590.5552 (USA & CAN) | +1 (250) 712.3393 (INTL)

Visit www.waterplay.com today and be a part of our social network:

